

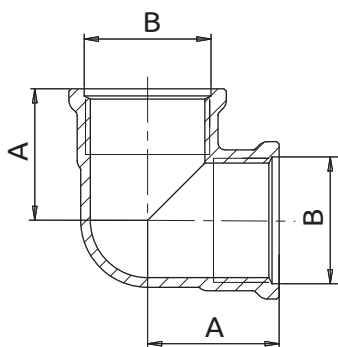
### / Impiego

Raccorderia progettata e realizzata per la distribuzione dell'acqua negli impianti di riscaldamento/condizionamento.

### / Materiali

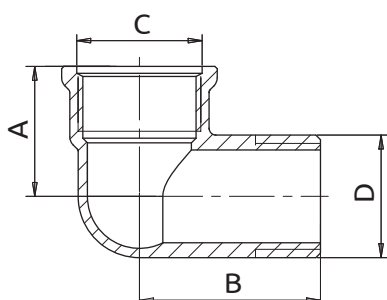
|                                    |                  |
|------------------------------------|------------------|
| <b>Raccordi stampati:</b>          | Ottone CW617N    |
| <b>Raccordi torniti:</b>           | Ottone CW617N    |
| <b>Guarnizioni (ove presenti):</b> | EPDM Perossidico |

### / Art. 1200 - Raccordo curvo F-F



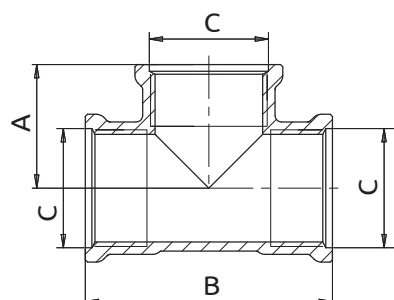
| Codice Giallo | Codice Nichelato | Codice Cromato | A    | B        |
|---------------|------------------|----------------|------|----------|
| 811200AD05    | 811200AD06       | 811200AD07     | 25   | 1/2" F   |
| 811200AE05    | 811200AE06       | 811200AE07     | 28   | 3/4" F   |
| 811200AF05    | 811200AF06       | 811200AF07     | 34,5 | 1" F     |
| 811200AG05    | 811200AG06       | -              | 42   | 1" 1/4 F |
| 811200AH05    | 811200AH06       | -              | 45   | 1" 1/2 F |
| 811200AJ05    | 811200AJ06       | -              | 51   | 2" F     |

### / Art. 1201 - Raccordo curvo M-F



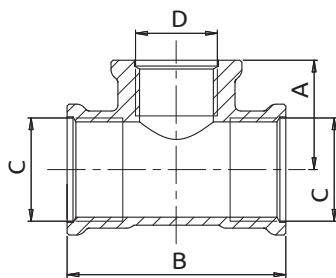
| Codice Giallo | Codice Nichelato | Codice Cromato | A    | B  | C        | D        |
|---------------|------------------|----------------|------|----|----------|----------|
| 811201AD05    | 811201AD06       | 811201AD07     | 25   | 36 | 1/2" F   | 1/2" M   |
| 811201AE05    | 811201AE06       | 811201AE07     | 28   | 39 | 3/4" F   | 3/4" M   |
| 811201AF05    | 811201AF06       | 811201AF07     | 34,5 | 47 | 1" F     | 1" M     |
| 811201AG05    | 811201AG06       | -              | 42   | 50 | 1" 1/4 F | 1" 1/4 M |
| 811201AH05    | 811201AH06       | -              | 45   | 58 | 1" 1/2 F | 1" 1/2 M |
| 811201AJ05    | 811201AJ06       | -              | 51   | 65 | 2" F     | 2" M     |

### / Art. 1202 - Raccordo TEE femmina



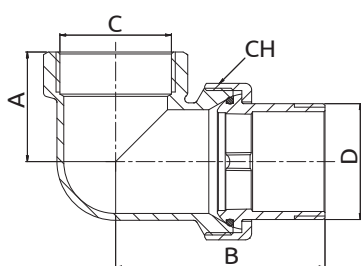
| Codice Giallo | Codice Nichelato | Codice Cromato | A    | B  | C        |
|---------------|------------------|----------------|------|----|----------|
| 811202AD05    | 811202AD06       | 811202AD07     | 25   | 36 | 1/2" F   |
| 811202AE05    | 811202AE06       | 811202AE07     | 28   | 39 | 3/4" F   |
| 811202AF05    | 811202AF06       | 811202AF07     | 34,5 | 47 | 1" F     |
| 811202AG05    | 811202AG06       | -              | 42   | 50 | 1" 1/4 F |
| 811202AH05    | 811202AH06       | -              | 45   | 58 | 1" 1/2 F |
| 811202AJ05    | 811202AJ06       | -              | 51   | 65 | 2" F     |

### Art. 1203 - Raccordo TEE femmina ridotto



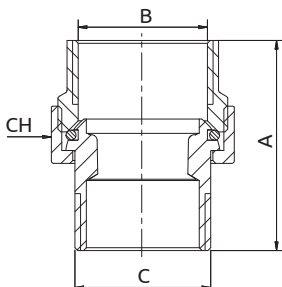
| Codice Giallo  | Codice Nichelato | A    | B  | C      | D    |
|----------------|------------------|------|----|--------|------|
| 811203ADACAD05 | 811203ADACAD06   | 25   | 50 | 1/2" F | 3/8" |
| 811203AEADAE05 | 811203AEADAE06   | 28   | 56 | 3/4" F | 1/2" |
| 811203AFAEAF05 | 811203AFAEAF06   | 34,5 | 69 | 1" F   | 3/4" |

### Art. 808 - Raccordo curvo 3 pezzi. Bocchettone con tenuta O-ring



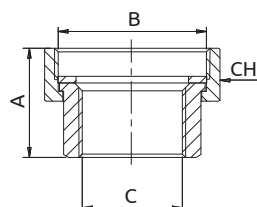
| Codice Giallo | Codice Nichelato | A    | B  | C        | D        | CH |
|---------------|------------------|------|----|----------|----------|----|
| 85808AC05     | 85808AC06        | 23   | 50 | 3/8" F   | 3/8" M   | 27 |
| 85808AD05     | 85808AD06        | 25   | 54 | 1/2" F   | 1/2" M   | 30 |
| 85808AE05     | 85808AE06        | 28   | 58 | 3/4" F   | 3/4" M   | 37 |
| 85808AF05     | 85808AF06        | 34,5 | 62 | 1" F     | 1" M     | 46 |
| 85808AG05     | 85808AG06        | 42   | 66 | 1" 1/4 F | 1" 1/4 M | 53 |
| 85808AH05     | 85808AH06        | 45   | 70 | 1" 1/2 F | 1" 1/2 M | 53 |
| 85808AJ05     | 85808AJ06        | 51   | 74 | 2" F     | 2" M     | 80 |

### Art. 818 - Raccordo diritto 3 pezzi. Bocchettone con tenuta O-ring



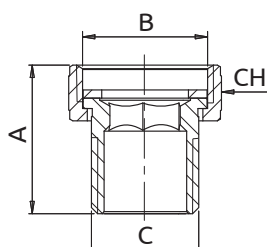
| Codice Giallo | Codice Nichelato | A  | B        | C        | CH |
|---------------|------------------|----|----------|----------|----|
| 85818AC05     | 85818AC06        | 32 | 3/8" F   | 3/8" M   | 27 |
| 85818AD05     | 85818AD06        | 36 | 1/2" F   | 1/2" M   | 30 |
| 85818AE05     | 85818AE06        | 40 | 3/4" F   | 3/4" M   | 37 |
| 85818AF05     | 85818AF06        | 44 | 1" F     | 1" M     | 46 |
| 85818AG05     | 85818AG06        | 48 | 1" 1/4 F | 1" 1/4 M | 53 |
| 85818AH05     | 85818AH06        | 52 | 1" 1/2 F | 1" 1/2 M | 53 |
| 85818AJ05     | 85818AJ06        | 56 | 2" F     | 2" M     | 80 |

### Art. 789 - Bocchettone sede piana F-F



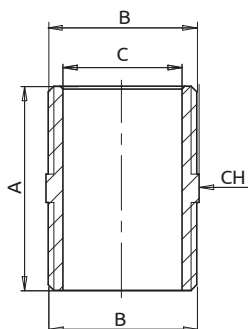
| Codice    | A  | B        | C      | CH |
|-----------|----|----------|--------|----|
| 82789AD05 | 27 | 1" F     | 1/2" F | 30 |
| 82789AE05 | 30 | 1" 1/2 F | 3/4" F | 37 |
| 82789AF05 | 33 | 1" 1/2 F | 1" F   | 46 |

### Art. 792 - Bocchettone sede piana M-F



| Codice    | A  | B        | C        | CH |
|-----------|----|----------|----------|----|
| 82792AD05 | 36 | 3/4" F   | 1/2" M   | 30 |
| 82792AE05 | 40 | 1" F     | 3/4" M   | 37 |
| 82792AF05 | 44 | 1" 1/4 F | 1" M     | 46 |
| 82792AG05 | 48 | 1" 1/2 F | 1" 1/4 M | 53 |

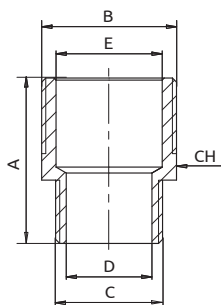
### / Art. 1210 - Raccordo nipples



| Codice Giallo       | Codice Nichelato    | Codice Cromato      | A    | B        | C  | CH |
|---------------------|---------------------|---------------------|------|----------|----|----|
| 811210AC05          | 811210AC06          | 811210AC07          | 24   | 3/8" M   | 12 | 17 |
| 811210AD05          | 811210AD06          | 811210AD07          | 26   | 1/2" M   | 15 | 21 |
| <b>811210AD05L*</b> | <b>811210AD06L*</b> | <b>811210AD07L*</b> | 33   | 1/2" M   | 15 | 21 |
| 811210AE05          | 811210AE06          | 811210AE07          | 36   | 3/4" M   | 21 | 27 |
| 811210AF05          | 811210AF06          | 811210AF07          | 43,5 | 1" M     | 26 | 33 |
| 811210AG05          | 811210AG06          | -                   | 43,5 | 1" 1/4 M | 34 | 42 |
| 811210AH05          | 811210AH06          | -                   | 44,5 | 1" 1/2 M | 39 | 48 |
| 811210AJ05          | 811210AJ06          | -                   | 45   | 2" M     | 51 | 60 |

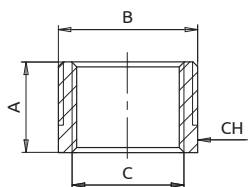
\*Versione prolungata

### / Art. 1211 - Raccordo nipples ridotto



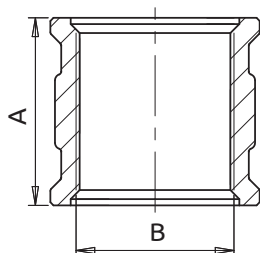
| Codice Giallo | Codice Nichelato | Codice Cromato | A    | B        | C        | D  | E  | CH |
|---------------|------------------|----------------|------|----------|----------|----|----|----|
| 811211ACAD05  | 811211ACAD06     | 811211ACAD07   | 25,5 | 1/2" M   | 3/8" M   | 12 | 15 | 21 |
| 811211ADAE05  | 811211ADAE06     | 811211ADAE07   | 31   | 3/4" M   | 1/2" M   | 15 | 21 | 27 |
| 811211ADAF05  | 811211ADAF06     | 811211ADAF07   | 35,5 | 1" M     | 1/2" M   | 15 | 26 | 33 |
| 811211AEAF05  | 811211AEAF06     | 811211AEAF07   | 40,5 | 1" M     | 3/4" M   | 21 | 26 | 33 |
| 811211AEAG05  | 811211AEAG06     | -              | 41   | 1" 1/4 M | 3/4" M   | 21 | 34 | 42 |
| 811211AFAG05  | 811211AFAG06     | -              | 44   | 1" 1/4 M | 1" M     | 26 | 34 | 42 |
| 811211AFAH05  | 811211AFAH06     | -              | 44,5 | 1" 1/2 M | 1" M     | 26 | 39 | 48 |
| 811211AGAH05  | 811211AGAH06     | -              | 44,5 | 1" 1/2 M | 1" 1/4 M | 34 | 39 | 48 |
| 811211AHAJ05  | 811211AHAJ06     | -              | 45   | 2" M     | 1" 1/2 M | 39 | 51 | 60 |

### / Art. 1212 - Raccordo nipples ridotto



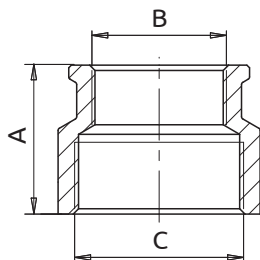
| Codice Giallo | Codice Nichelato | Codice Cromato | A    | B        | C        | CH |
|---------------|------------------|----------------|------|----------|----------|----|
| 811212ACAD05  | 811212ACAD06     | 811212ADAC07   | 17   | 1/2" M   | 3/8" F   | 21 |
| 811212ACAE05  | 811212ACAE06     | 811212AEAC07   | 17   | 3/4" M   | 3/8" F   | 27 |
| 811212ACAF05  | 811212ACAF06     | 811212AFAC07   | 17   | 1" M     | 3/8" F   | 33 |
| 811212ADAE05  | 811212ADAE06     | 811212AEAD07   | 23,5 | 3/4" M   | 1/2" F   | 27 |
| 811212ADAF05  | 811212ADAF06     | 811212AFAD07   | 23,5 | 1" M     | 1/2" F   | 33 |
| 811212ADAG05  | 811212ADAG06     | -              | 23,5 | 1" 1/4 M | 1/2" F   | 42 |
| 811212ADAH05  | 811212ADAH06     | -              | 23,5 | 1" 1/2 M | 1/2" F   | 48 |
| 811212ADAJ05  | 811212ADAJ06     | -              | 23,5 | 2" M     | 1/2" F   | 60 |
| 811212AEAF05  | 811212AEAF06     | 811212AFAE07   | 23,5 | 1" M     | 3/4" F   | 33 |
| 811212AEAG05  | 811212AEAG06     | -              | 25,5 | 1" 1/4 M | 3/4" F   | 42 |
| 811212AEAH05  | 811212AEAH06     | -              | 23,5 | 1" 1/2 M | 3/4" F   | 48 |
| 811212AEAJ05  | 811212AEAJ06     | -              | 23,5 | 2" M     | 3/4" F   | 60 |
| 811212AFAG05  | 811212AFAG06     | -              | 23,5 | 1" 1/4 M | 1" F     | 42 |
| 811212AFAH05  | 811212AFAH06     | -              | 23,5 | 1" 1/2 M | 1" F     | 48 |
| 811212AFAJ05  | 811212AFAJ06     | -              | 23,5 | 2" M     | 1" F     | 60 |
| 811212AGAH05  | 811212AGAH06     | -              | 23,5 | 1" 1/2 M | 1" 1/4 F | 48 |
| 811212AGAJ05  | 811212AGAJ06     | -              | 25,5 | 2" M     | 1" 1/4 F | 60 |
| 811212AHAJ05  | 811212AHAJ06     | -              | 24   | 2" M     | 1" 1/2 F | 60 |
| 811212AHAK05  | 811212AHAK06     | -              | 25   | 2" 1/2 M | 1" 1/2 F | 77 |
| 811212AJAK05  | 811212AJAK06     | -              | 26   | 2" 1/2 M | 2" F     | 77 |

### Art. 1213 - Manicotto femmina



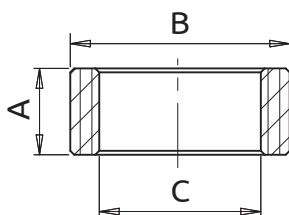
| Codice Giallo | Codice Nichelato | Codice Cromato | A  | B       |
|---------------|------------------|----------------|----|---------|
| 811213AC05    | 811213AC06       | 811213AC07     | 25 | 3/8" F  |
| 811213AD05    | 811213AD06       | 811213AD07     | 27 | 1/2" F  |
| 811213AE05    | 811213AE06       | 811213AE07     | 30 | 3/4" F  |
| 811213AF05    | 811213AF06       | 811213AF07     | 32 | 1" F    |
| 811213AG05    | 811213AG06       | -              | 38 | 1"1/4 F |
| 811213AH05    | 811213AH06       | -              | 40 | 1"1/2 F |
| 811213AJ05    | 811213AJ06       | -              | 44 | 2" F    |

### Art. 1214 - Manicotto F-F



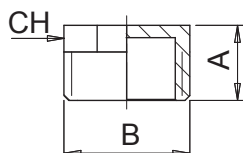
| Codice Giallo | Codice Nichelato | Codice Cromato | A    | B        | C        |
|---------------|------------------|----------------|------|----------|----------|
| 811214ACAD05  | 811214ACAD06     | 811214ACAD07   | 22,5 | 3/8" F   | 1/2" F   |
| 811214ADAE05  | 811214ADAE06     | 811214ADAE07   | 25   | 1/2" F   | 3/4" F   |
| 811214ADAF05  | 811214ADAF06     | 811214ADAF07   | 29,5 | 1/2" F   | 1" F     |
| 811214AEAF05  | 811214AEAF06     | 811214AEAF07   | 28   | 3/4" F   | 1" F     |
| 811214AEAG05  | 811214AEAG06     | -              | 30   | 3/4" F   | 1" 1/4 F |
| 811214AFAG05  | 811214AFAG06     | -              | 31   | 1" F     | 1" 1/4 F |
| 811214AFAH05  | 811214AFAH06     | -              | 33   | 1" F     | 1" 1/2 F |
| 811214AFAJ05  | 811214AFAJ06     | -              | 35   | 1" F     | 2" F     |
| 811214AGAH05  | 811214AGAH06     | -              | 30,5 | 1" 1/4 F | 1" 1/2 F |
| 811214AGAJ05  | 811214AGAJ06     | -              | 33,5 | 1" 1/4 F | 2" F     |
| 811214AHAJ05  | 811214AHAJ06     | -              | 32   | 1"1/2 F  | 2" F     |

### Art. 1215 - Ghiera riduzione M-F



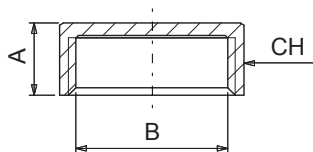
| Codice       | A  | B        | C        |
|--------------|----|----------|----------|
| 811215ADAC05 | 10 | 1/2" M   | 3/8" F   |
| 811215AEAD05 | 10 | 1/2" M   | 1/2" F   |
| 811215AFAD05 | 13 | 1" M     | 3/4" F   |
| 811215AFAE05 | 13 | 1" M     | 1" F     |
| 811215AGAF05 | 13 | 1" 1/4 M | 1" 1/4 F |
| 811215AHAF05 | 15 | 1" 1/2 M | 1" 1/2 F |

### Art. 237 - Tappo di testa cieco femmina



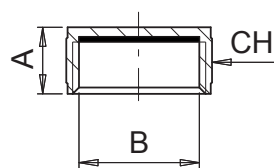
| Codice Giallo | Codice Nichelato | A  | B    | CH |
|---------------|------------------|----|------|----|
| 87237AD05     | 87237AD06        | 22 | 1/2" | 21 |
| 87237AE05     | 87237AE06        | 22 | 3/4" | 33 |
| 87237AF05     | 87237AF06        | 22 | 1"   | 42 |

### / Art. 201 - Tappo di testa cieco femmina



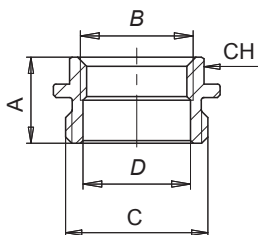
| Codice Giallo | Codice Nichelato | A    | B      | CH |
|---------------|------------------|------|--------|----|
| 87201AD05     | 87201AD06        | 10,5 | 1/2"   | 21 |
| 87201AE05     | 87201AE06        | 14,5 | 3/4"   | 27 |
| 87201AF05     | 87201AF06        | 14,5 | 1"     | 33 |
| 87201AG05     | 87201AG06        | 14,5 | 1" 1/4 | 42 |

### / Art. 238 - Tappo di testa cieco femmina con guarnizione



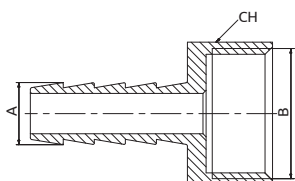
| Codice Giallo | Codice Nichelato | A    | B      | CH |
|---------------|------------------|------|--------|----|
| 87238AC05     | 87238AC06        | 10,5 | 3/8"   | 17 |
| 87238AD05     | 87238AD06        | 10,5 | 1/2"   | 21 |
| 87238OO05     | 87238OO06        | 10,5 | 24x1,5 | 27 |
| 87238AE05     | 87238AE06        | 10,5 | 3/4"   | 27 |

### / Art. 236 - Tappo di testa forato con guarnizione



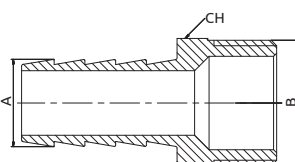
| Codice Giallo | Codice Nichelato | A    | B      | C      | D  | CH |
|---------------|------------------|------|--------|--------|----|----|
| 87236LB05     | 87236LB06        | 14,5 | 3/8" F | 3/4" M | 20 | 25 |
| 87236LC05     | 87236LC06        | 14,5 | 1/2" F | 3/4" M | 20 | 25 |
| 87236LD05     | 87236LD06        | 14,5 | 3/8" F | 1" M   | 26 | 25 |
| 87236LE05     | 87236LE06        | 14,5 | 1/2" F | 1" M   | 26 | 25 |
| 87236LF05     | 87236LF06        | 14,5 | 3/4" F | 1" M   | 26 | 38 |

### / Art. 521 - Portagomma Femmina



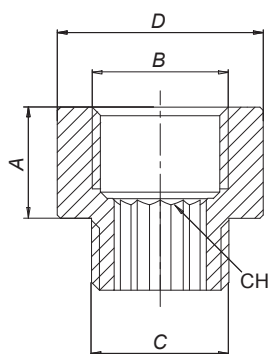
| Codice      | A    | B     |
|-------------|------|-------|
| 81521BCAD05 | 10   | 1/2 F |
| 81521BEAD05 | 14,5 | 1/2 F |

### / Art. 522 - Portagomma Maschio



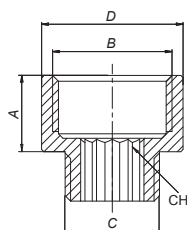
| Codice      | A    | B     |
|-------------|------|-------|
| 81522BCAD05 | 10   | 1/2 M |
| 81522BEAD05 | 14,5 | 1/2 M |

### Art. 19 - Prolunga M-F



| Codice Giallo | Codice Cromato | A   | B      | C      | D    | CH |
|---------------|----------------|-----|--------|--------|------|----|
| 81019AC01005  | 81019AC01006   | 10  | 3/8" F | 3/8" M | 21,5 | 12 |
| 81019AC01505  | 81019AC01506   | 15  | 3/8" F | 3/8" M | 21,5 | 12 |
| 81019AC02005  | 81019AC02006   | 20  | 3/8" F | 3/8" M | 21,5 | 12 |
| 81019AC03005  | 81019AC03006   | 30  | 3/8" F | 3/8" M | 21,5 | 12 |
| 81019AC04005  | 81019AC04006   | 40  | 3/8" F | 3/8" M | 21,5 | 12 |
| 81019AC05005  | 81019AC05006   | 50  | 3/8" F | 3/8" M | 21,5 | 12 |
| 81019AC06005  | 81019AC06006   | 60  | 3/8" F | 3/8" M | 21,5 | 12 |
| 81019AC08005  | 81019AC08006   | 80  | 3/8" F | 3/8" M | 21,5 | 12 |
| 81019AC10005  | 81019AC10006   | 100 | 3/8" F | 3/8" M | 21,5 | 12 |
| 81019AD01005  | 81019AD01006   | 10  | 1/2" F | 1/2" M | 25,9 | 13 |
| 81019AD01505  | 81019AD01506   | 15  | 1/2" F | 1/2" M | 25,9 | 13 |
| 81019AD02005  | 81019AD02006   | 20  | 1/2" F | 1/2" M | 25,9 | 13 |
| 81019AD02505  | 81019AD02506   | 25  | 1/2" F | 1/2" M | 25,9 | 13 |
| 81019AD03005  | 81019AD03006   | 30  | 1/2" F | 1/2" M | 25,9 | 13 |
| 81019AD04005  | 81019AD04006   | 40  | 1/2" F | 1/2" M | 25,9 | 13 |
| 81019AD05005  | 81019AD05006   | 50  | 1/2" F | 1/2" M | 25,9 | 13 |
| 81019AD06005  | 81019AD06006   | 60  | 1/2" F | 1/2" M | 25,9 | 13 |
| 81019AD07005  | 81019AD07006   | 70  | 1/2" F | 1/2" M | 25,9 | 13 |
| 81019AD08005  | 81019AD08006   | 80  | 1/2" F | 1/2" M | 25,9 | 13 |
| 81019AD10005  | 81019AD10006   | 100 | 1/2" F | 1/2" M | 25,9 | 13 |
| 81019AE01005  | 81019AE01006   | 10  | 3/4" F | 3/4" M | 31,6 | 17 |
| 81019AE01505  | 81019AE01506   | 15  | 3/4" F | 3/4" M | 31,6 | 17 |
| 81019AE02005  | 81019AE02006   | 20  | 3/4" F | 3/4" M | 31,6 | 17 |
| 81019AE02505  | 81019AE02506   | 25  | 3/4" F | 3/4" M | 31,6 | 17 |
| 81019AE03005  | 81019AE03006   | 30  | 3/4" F | 3/4" M | 31,6 | 17 |
| 81019AE04005  | 81019AE04006   | 40  | 3/4" F | 3/4" M | 31,6 | 17 |
| 81019AE05005  | 81019AE05006   | 50  | 3/4" F | 3/4" M | 31,6 | 17 |
| 81019AE06005  | 81019AE06006   | 60  | 3/4" F | 3/4" M | 31,6 | 17 |
| 81019AE08005  | 81019AE08006   | 80  | 3/4" F | 3/4" M | 31,6 | 17 |
| 81019AE10005  | 81019AE10006   | 100 | 3/4" F | 3/4" M | 31,6 | 17 |
| 81019AF01005  | 81019AF01006   | 10  | 1" F   | 1" M   | 38   | 17 |
| 81019AF01505  | 81019AF01506   | 15  | 1" F   | 1" M   | 38   | 17 |
| 81019AF02005  | 81019AF02006   | 20  | 1" F   | 1" M   | 38   | 17 |
| 81019AF03005  | 81019AF03006   | 30  | 1" F   | 1" M   | 38   | 17 |
| 81019AF04005  | 81019AF04006   | 40  | 1" F   | 1" M   | 38   | 17 |
| 81019AF05005  | 81019AF05006   | 50  | 1" F   | 1" M   | 38   | 17 |
| 81019AF08005  | 81019AF08006   | 80  | 1" F   | 1" M   | 38   | 17 |
| 81019AF10005  | 81019AF10006   | 100 | 1" F   | 1" M   | 38   | 17 |

### Art. 20 - Prolunga M-F ridotta

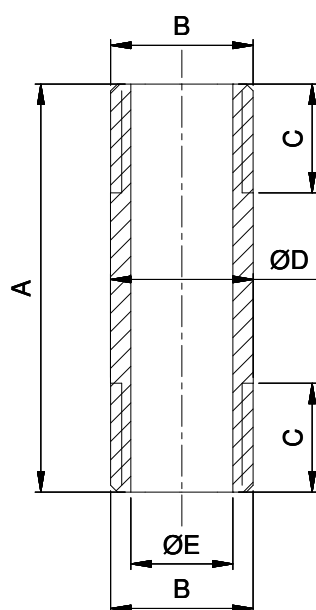


| Codice Giallo | Codice Cromato | A  | B      | C      | D    | CH |
|---------------|----------------|----|--------|--------|------|----|
| 81020ACAD05   | 81020ACAD06    | 26 | 1/2" F | 3/8" M | 25,5 | 10 |
| 81020ADAE05   | 81020ADAE06    | 28 | 3/4" F | 1/2" M | 31,5 | 12 |
| 81020AEAF05   | 81020AEAF06    | 30 | 1" F   | 3/4" M | 37,8 | 18 |

### / Art. 21 - Barilotti M-M

#### Dettagli tecnici

|                                      |                      |
|--------------------------------------|----------------------|
| <b>Temperatura min. d'esercizio:</b> | -20°C (con glicole)  |
| <b>Temperatura max. d'esercizio:</b> | 120°C                |
| <b>Pressione max. d'esercizio:</b>   | 16 bar (fino 1"1/4") |



| Codice       | A   | B     | C  | ØD | ØE |
|--------------|-----|-------|----|----|----|
| 81021AD04005 | 40  | G1/2" | 16 | 21 | 15 |
| 81021AD05005 | 50  | G1/2" | 16 | 21 | 15 |
| 81021AD06005 | 60  | G1/2" | 16 | 21 | 15 |
| 81021AD07005 | 70  | G1/2" | 16 | 21 | 15 |
| 81021AD08005 | 80  | G1/2" | 16 | 21 | 15 |
| 81021AD10005 | 100 | G1/2" | 16 | 21 | 15 |
| 81021AD12005 | 120 | G1/2" | 16 | 21 | 15 |
| 81021AD15005 | 150 | G1/2" | 16 | 21 | 15 |
| 81021AD20005 | 200 | G1/2" | 16 | 21 | 15 |
| 81021AD25005 | 250 | G1/2" | 16 | 21 | 15 |
| 81021AD30005 | 300 | G1/2" | 16 | 21 | 15 |
| 81021AD40005 | 400 | G1/2" | 16 | 21 | 15 |
| 81021AD50005 | 500 | G1/2" | 16 | 21 | 15 |
| 81021AE04005 | 40  | G3/4" | 16 | 26 | 20 |
| 81021AE05005 | 50  | G3/4" | 16 | 26 | 20 |
| 81021AE06005 | 60  | G3/4" | 16 | 26 | 20 |
| 81021AE07005 | 70  | G3/4" | 16 | 26 | 20 |
| 81021AE08005 | 80  | G3/4" | 16 | 26 | 20 |
| 81021AE10005 | 100 | G3/4" | 16 | 26 | 20 |
| 81021AE12005 | 120 | G3/4" | 16 | 26 | 20 |
| 81021AE15005 | 150 | G3/4" | 16 | 26 | 20 |
| 81021AE20005 | 200 | G3/4" | 16 | 26 | 20 |
| 81021AE25005 | 250 | G3/4" | 16 | 26 | 20 |
| 81021AE30005 | 300 | G3/4" | 16 | 26 | 20 |
| 81021AE40005 | 400 | G3/4" | 16 | 26 | 20 |
| 81021AE50005 | 500 | G3/4" | 16 | 26 | 20 |
| 81021AF04005 | 40  | G1"   | 18 | 33 | 26 |
| 81021AF05005 | 50  | G1"   | 18 | 33 | 26 |
| 81021AF06005 | 60  | G1"   | 18 | 33 | 26 |
| 81021AF07005 | 70  | G1"   | 18 | 33 | 26 |
| 81021AF08005 | 80  | G1"   | 18 | 33 | 26 |
| 81021AF10005 | 100 | G1"   | 18 | 33 | 26 |
| 81021AF12005 | 120 | G1"   | 18 | 33 | 26 |
| 81021AF15005 | 150 | G1"   | 18 | 33 | 26 |
| 81021AF20005 | 200 | G1"   | 18 | 33 | 26 |
| 81021AF25005 | 250 | G1"   | 18 | 33 | 26 |
| 81021AF30005 | 300 | G1"   | 18 | 33 | 26 |
| 81021AF40005 | 400 | G1"   | 18 | 33 | 26 |
| 81021AF50005 | 500 | G1"   | 18 | 33 | 26 |

Su questo articolo è presente la marcatura di identificazione dove vengono riportate le indicazioni del produttore e le caratteristiche dimensionali.



Produttore

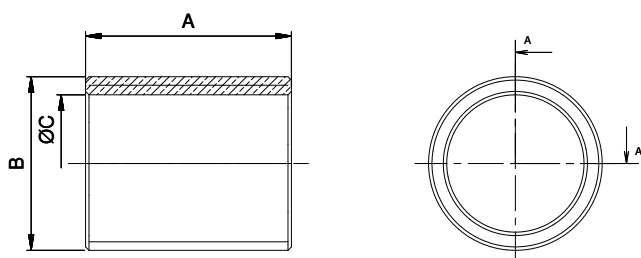


Dimensione



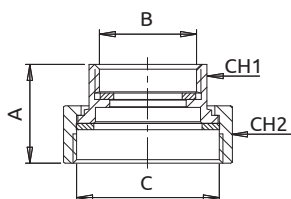
Lunghezza

### Art. 22 - Nipplo Filettato



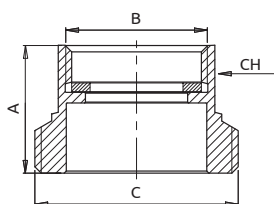
| Codice    | A  | B    | C  |
|-----------|----|------|----|
| 81022AD05 | 30 | 1/2" | 15 |
| 81022AE05 | 30 | 3/4" | 20 |
| 81022AF05 | 35 | 1"   | 26 |

### Art. 796 - Bocchettone per attacco pompa



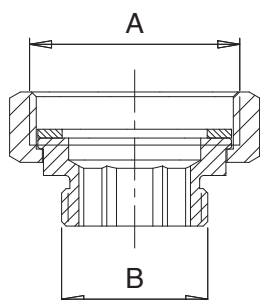
| Codice    | A  | B    | C      | CH1 | CH2 |
|-----------|----|------|--------|-----|-----|
| 82796AF05 | 31 | 1" F | 1" 1/2 | 37  | 53  |

### Art. 797 - Raccordo Maschio-Femmina con guarnizioni



| Codice    | A    | B    | C        | CH |
|-----------|------|------|----------|----|
| 82797AF05 | 16,5 | 1" F | 1" 1/2 M | 37 |

### Art. 798 - Raccordo Maschio-Femmina con calotta girevole



| Codice    | A        | B    | CH |
|-----------|----------|------|----|
| 82798AF05 | 1" 1/2 F | 1" M | 37 |