

/ Description

Universal, handy electric tool for producing pipe pressing joints for all common pressfitting systems.

Pipe pressing joints Ø 10 – 108 (110) mm
 Ø 3/8" - 4"

Complete range of REMS pressing Jaws/
pressing rings for all common pressfitting systems.

REMS Power-Press SE – universal up to Ø 110 mm.
Secure crimping in seconds. Free 360° rotation.
Automatic locking of pressing Jaws.
Maintenance required two years after purchase.

/ System advantage

Only one type of pressing Jaws/pressing rings for all
REMS radial presses 32 kN and suitable radial presses of
other makes with 32 kN thrust force.

All pressing Jaws marked by a * have another connection
and also fit the manual radial press REMS Eco-Press.
Storage is therefore particularly simple and economical.

/ Pressing Jaws/pressing rings for all common systems

Complete assortment of REMS pressing Jaws/pressing rings for all common
pressfitting systems. Highly durable pressing Jaws/pressing rings made of
tenacious, specially hardened special steel. Pressing contours of REMS pressing
Jaws/pressing rings are system-specific and correspond to the respective
press fitting system. Thus perfect system conformity, safe press jointing.
Adapter Jaws required for driving the REMS (PR) pressing rings.

/ Design

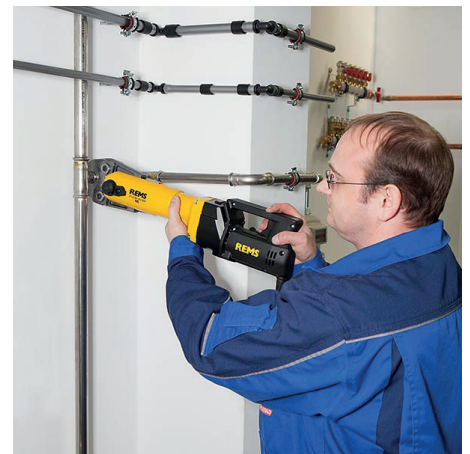
Compact, robust, job site-proven. Small in size, slender design, drive unit only 4.7 kg. Works anywhere, free-hand,
overhead, in confined areas. Secure seating of pressing Jaws/adapter Jaws by automatic locking. Also suitable for other
suitable makes of pressing Jaws/pressing chains.

/ Pressing operation by touch-control

For reliable service, operating and functional safety. A perfect joint is achieved when pressing Jaws close completely.
The pressing Jaws remain in a closed position until machine is switched and runs into reverse. The perfect pressing
joint (completely closed pressing jaws) can be observed.

/ Drive

Enormous thrust and pressing force for fast and perfect press jointing. Thrust force 32 kN. Powerful electro-mechanical
drive with proven universal motor, 450 W, maintenance-free gear with safety slipping clutch and in-feed system with
machine screw spindle. Overload protection. Safety tip switch.



/ Supply format

REMS Power-Press SE Basic-Pack. Electric radial press 32 kN for producing pressing joints Ø 10 - 108 (110) MM, Ø 3/8" - 4". For driving REMS pressing Jaws/ pressing rings and other suitable makes of pressing Jaws/pressing rings. Pressing Jaws seat with auto matic locking. Electro-mechanical drive with proven universal motor 230 V or 110 V, 50 – 60 Hz, 450 W, maintenance-free gear with safety slipping clutch and in-feed system with machine screw spindle, overload protection, safety tip switch. In sturdy steel case.

REMS Power-Press SE is supplied in sturdy steel case version.



/ Accessories

Description	Code
Power press Jaws 16 - TH	81473GH20
Power press Jaws 18 - TH	81473GJ20
Power press Jaws 20 - TH	81473BQ20
Power press Jaws 25 - TH	81473GO20
Power press Jaws 26 - TH	81473GP20
Power press Jaws 32 - TH	81473GQ20
Power press Jaws 40 - TH	81473GS20