

# Under-boiler Magnetic Filter

## 753

**ICMA**

ST.753.11.22.EN (NC 1016)

### / Function

Icma under-boiler magnetic filter allows the removal of the impurities in heating and air conditioning systems such as rust and sand.

The constant passage of fluid in the filter ensures complete removal of the impurities, preserving the system components such as heat exchanger, circulators.

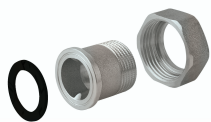
Thanks to its compact size, Icma dirt separator filter is ideal for installation on all type of boilers on the market.

### / Product range

ARTICLE	CODE	WALL SIZE CONNECTION	BOILER CONNECTION SIZE	FINISH
753	82753AE06	3/4" M ISO 228	3/4" F	NICKEL PLATED

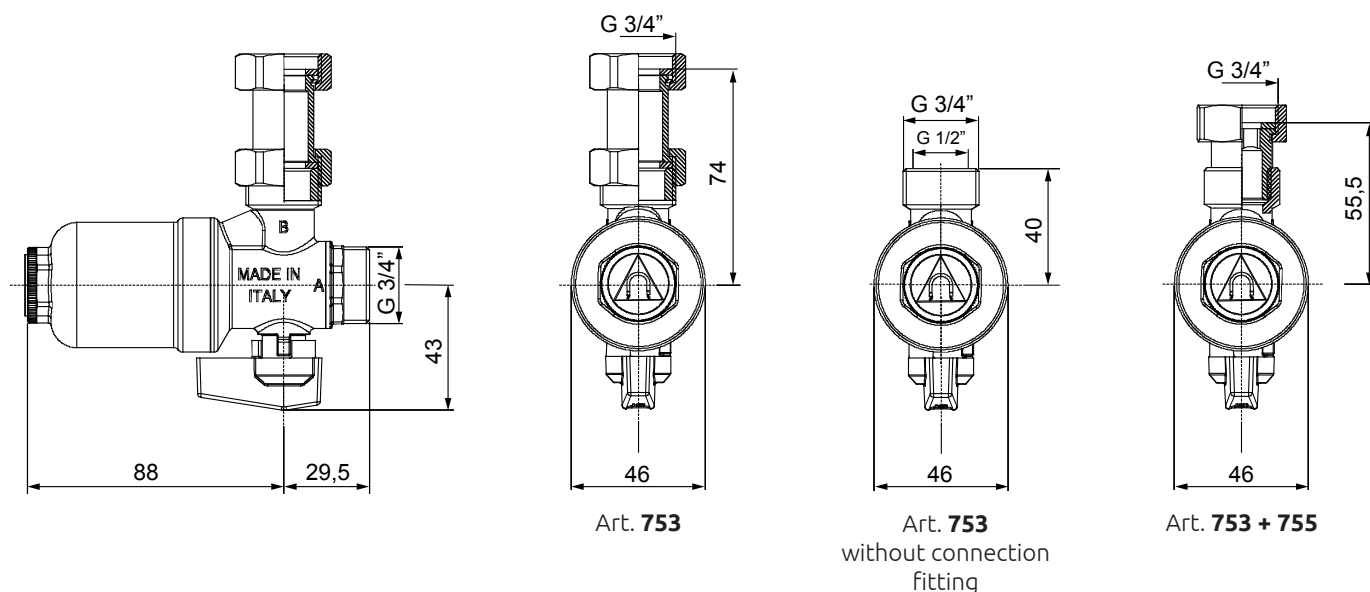


### / Accessories



ARTICLE	CODE	DESCRIPTION	SIZE	FINISH
792	82792AD06	FLAT SEAT CONNECTION	1/2" M x 3/4"	NICKEL PLATED

### / Dimensions



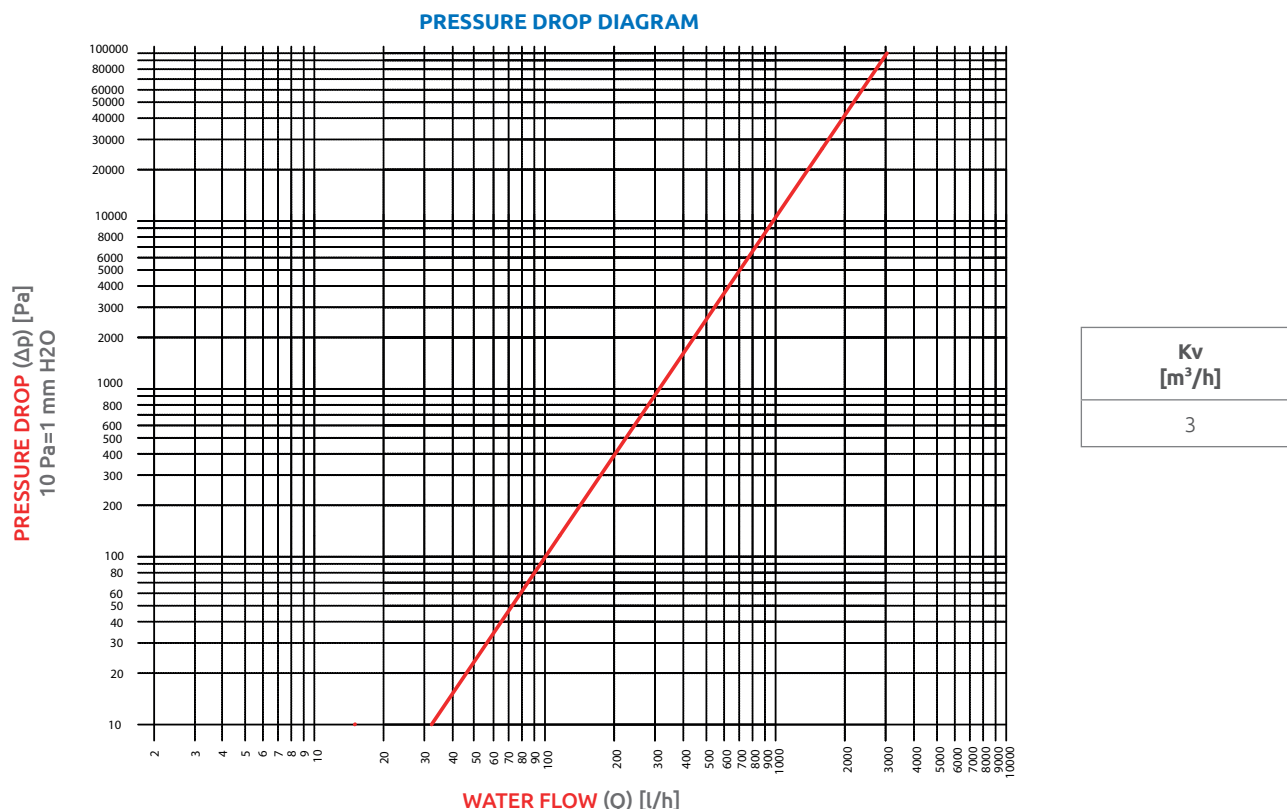
### / Construction features

Body	Brass CW617N UNI EN 12165 Nickel plated
Strainer container	Brass CW617N UNI EN 12165 Nickel plated
O-ring seals	EPDM - VITON
Filtering cartridge	Stainless steel AISI 304
Ball	Brass CW617N UNI EN 12165 Chromed plated
Seat gasket	PTFE
Control lever	Gray painted aluminum
Magnet	Neodymium 12.000 gauss
Fitting with nut	Brass CW617N UNI EN 12165 Nickel plated

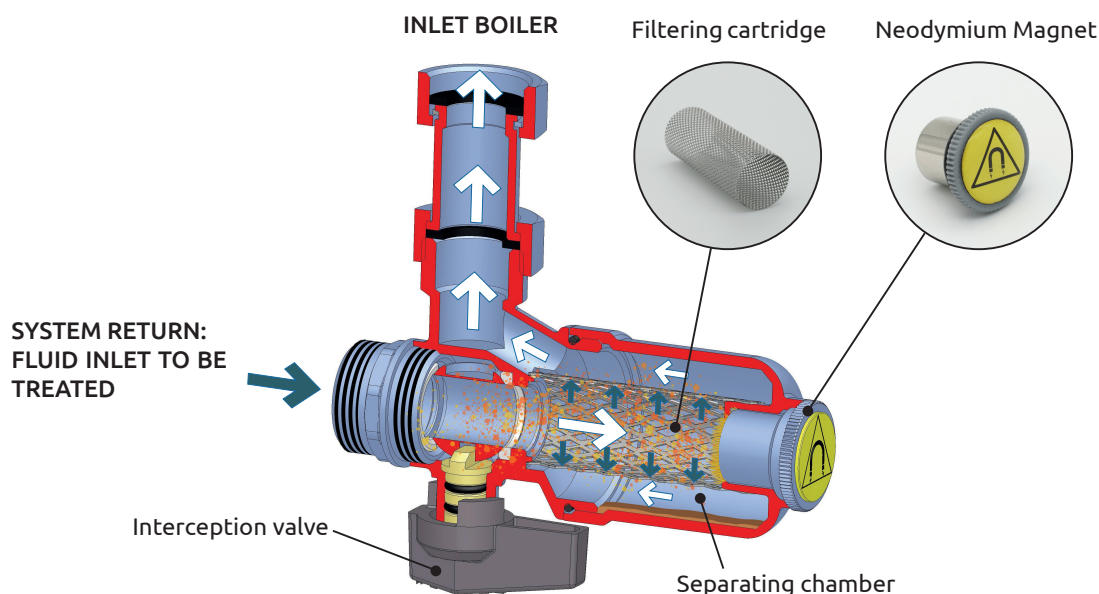
### / Technical specifications

Maximum working pressure	6 bar
Maximum working Temperature	0 to 110°C
Fluids used	Water and glycol based solutions
Maximum percentage of glycol	30%
Cartridge filtration degrees	800 µm

### / Hydraulic Specifications



### / Functioning



ICMA magnetic filter removes the impurities (mainly sand and rust) in heating and air conditioning systems based on three principles:

1. Mechanical filtration (Filtering cartridge 800 µm).
2. Magnetic field (Neodymium Magnet) that separates ferrous particles.
3. Dirt separating chamber.

It is installed on the return of the heating circuit to protect the heat exchanger and circulator. The integrated interception valve allows to isolate the system to permit periodic cleaning, emptying only the water contained in the filter cartridge holder cup.

# Under-boiler Magnetic Filter

## 753



ST.753.11.22.EN (NC 1016)

### WARNING!



The magnet generates a very strong magnetic field.

It is recommended for people with pacemakers to keep a safe distance during maintenance, or take precautions. Pay attention also to the use of electronic devices near the magnets to avoid compromising on their operation.