

AIR VENT VALVES

700-707-708-709-715-716-719-710

Function

The automatic air vent valves perform the function of eliminating the need for manual intervention of the air that accumulates inside the system circuits.

In this way the occurrence of negative phenomena such as corrosion, air pockets located in the heating bodies, cavitation in the circulation pumps is avoided.



Product Range

Art. 700 - Automatic compact air vent valve.
Art. 707 - Medium automatic air vent valve.
Art. 708 - Large automatic air vent valve.
Art. 709 - Automatic air vent valve diameter reduced.

Art. 715 - Angled automatic air vent valve.
Art. 719 - Automatic air vent by side valve.
Art. 710 - Interception cap used with articles:
700 - 707 - 708 - 709

Technical Features

Max working pressure:	10 bar
Ideal air vent pressure:	
- art. 707 - 708 - 709 - 715:	2.5 bar
- art. 719:	4 bar
Max working temperature:	110°C
Working fluids:	water and glycol solutions
Max percentage of glycol:	30%

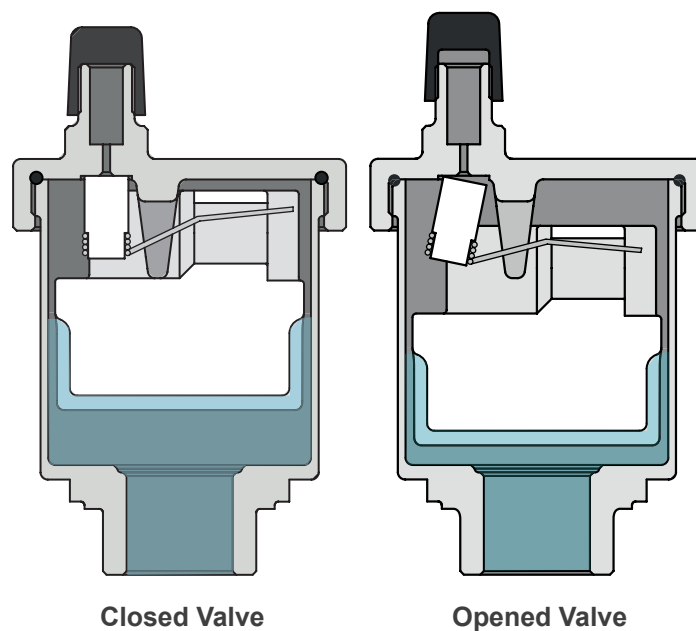
Physical Features

Body:	Brass CB754S UNI EN 1982:2000
Cover:	Brass CB754S UNI EN 1982:2000
Floating:	Polyethylene
Cap:	Polyethylene
Jumper:	Acetal
Handle:	Acetal
Stopper:	Acetal
Shutter mechanism:	Brass CW 614 N UNI EN 12164
OR:	NBR 70 SH

Working principle

The accumulation of air bubbles in the valve body causes the float to lower and the shutter to open by means of the connection lever, allowing air to escape from the valve body.

Valve operation is guaranteed for a pressure optimal air discharge of 2.5 bar.
For higher pressures, exhaust efficiency decreases.



Installation

The valve is installed in a vertical position in the points of the system where it is expected to collect air pockets. During operation the upper cap must be loosened. Installation of the valve in places where there is a risk of frost is not recommended.

AIR VENT VALVES

700-707-708-709-715-716-719-710

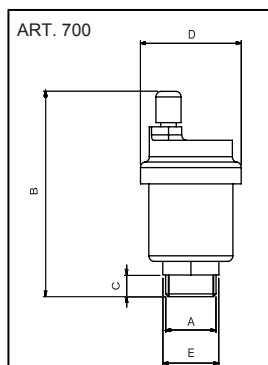
Accessories

For air vent valves art. 707 the interception tap art. 710. 3/8 and 1/2 attacks. Yellow or nickel-plated version. Fillet thread with "Oring".

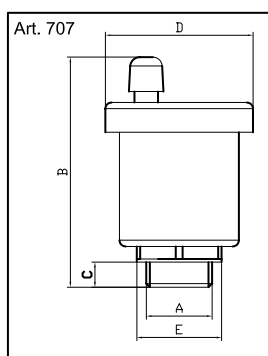
The automatic shut-off valve facilitates maintenance and control operations of the venting device, blocking the flow of water when the air vent valve is disengaged.



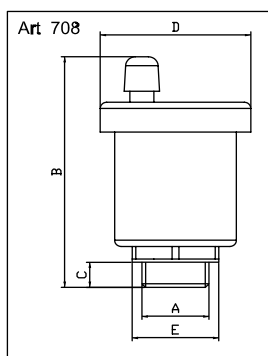
Dimensions



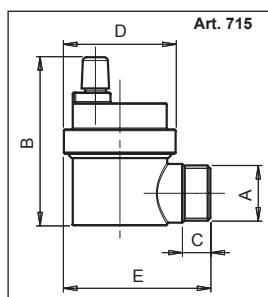
Code	Finishing	Size	A	B	C	D	E
82700AC05	YELLOW	G 3/8"	G 3/8"	76	8	42	CH 22
82700AC06	NICKEL						
82700AD05	YELLOW	G 1/2"	G 1/2"	76	8	42	CH 27
82700AD06	NICKEL						



Code	Finishing	Size	A	B	C	D	E
82707AC05	YELLOW	G 3/8"	G 3/8"	74	8	47	CH 22
82707AC06	NICKEL						
82707AD05	YELLOW	G 1/2"	G 1/2"	74	8	47	CH 27
82707AD06	NICKEL						
82707AE05	YELLOW	G 3/4"	G 3/4"	100	10	50	CH 30
82707AE06	NICKEL						



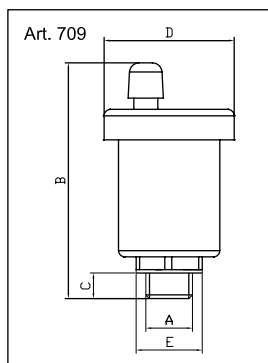
Code	Finishing	Size	A	B	C	D	E
82708AC05	YELLOW	G 3/8"	G 3/8"	80	8	50	CH 22
82708AC06	NICKEL						
82708AD05	YELLOW	G 1/2"	G 1/2"	80	8	50	CH 27
82708AD06	NICKEL						



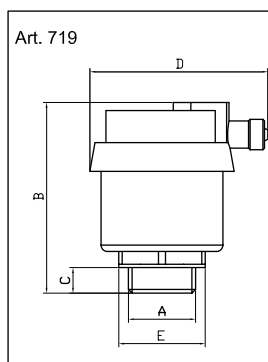
Code	Finishing	Size	A	B	C	D	E
82715AC06	NICKEL	G 3/8"	G 3/8"	64	10,5	41,5	54,5
82715AD06	NICKEL	G 1/2"	G 1/2"	64	10,5	41,5	54,5
82715AE06	NICKEL	G 3/4"	G 3/4"	65	13	37	50

AIR VENT VALVES

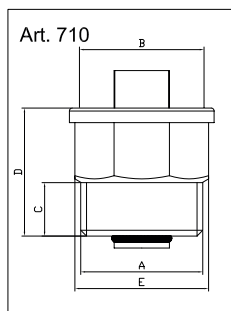
700-707-708-709-715-716-719-710



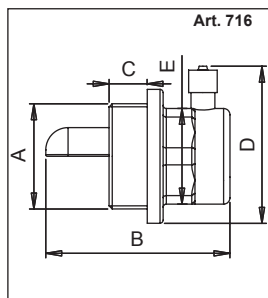
Code	Finishing	Size	A	B	C	D	E
82709AC05	YELLOW	G 3/8"	G 3/8"	80	8	37	CH 22
82709AC06	NICKEL						
82709AD05	YELLOW	G 1/2"	G 1/2"	80	8	37	CH 27
82709AD06	NICKEL						



Code	Finishing	Size	A	B	C	D	E
82719AC05	YELLOW	G 3/8"	G 3/8"	62	8	55	CH 22
82719AC06	NICKEL						
82719AD05	YELLOW	G 1/2"	G 1/2"	62	8	55	CH 27
82719AD06	NICKEL						



Code	Finishing	Size	A	B	C	D	E
82710AC05	YELLOW	G 3/8"	G 3/8"	G 3/8"	9	22	CH 19
82710AC06	NICKEL						
82710AD05	YELLOW	G 1/2"	G 1/2"	G 1/2"	10	22	CH 23
82710AD06	NICKEL						



Code	Finishing	Size	A	B	C	D	E
82716AF06	NICHELATO	G 1"	G 1"	58	12	49	CH 30
82716AT06	NICHELATO	G 1"	G 1"	58	12	49	CH 30