

Function

The thermostatic heads Art. 987 and 990, installed on thermostatically controlled valves, allow to limit the temperature of the supply water in heating systems. They are equipped with a liquid-sensitive element that is installed to detect the temperature away from the radiator.

Based on the temperature detected by the probe, the thermostatic head opens or closes the thermostatic valve in order to keep the delivery temperature set on the knob constant.



Product Range

SERIES	CODE	ONNECTION	SENSOR LENGTH
987	82987AC20	28x1,5	2m
990	82990AC20	30x1,5	2m

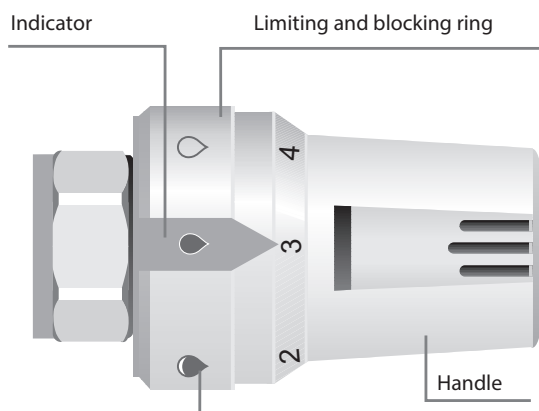
Technical Features

Max operating pressure	10 bar
Max differential pressure	1 bar
Max operating temperature	100°C
Max enviroment temperature	60°C
Adjustment range	0÷5
Adjustment temperature range	0÷28°C
Antifreeze intervention	~6°C
Hysteresis with liquid element	0,3 K

Manufacturing Features

Body:	Nylon66 F.G. 30%
Spring:	Stainless steel
Ferrule:	Brass CW 614 N UNI EN 12164
Sensor:	Composite

Temperature Adjustment



Drop symbols: the decreasing colours indicate the different values on which the thermostatic head can be limited

0	✱	1	2	3	4	5
0°C	~6°C	~12°C	~16°C	~20°C	~24°C	~28°C

Installazione

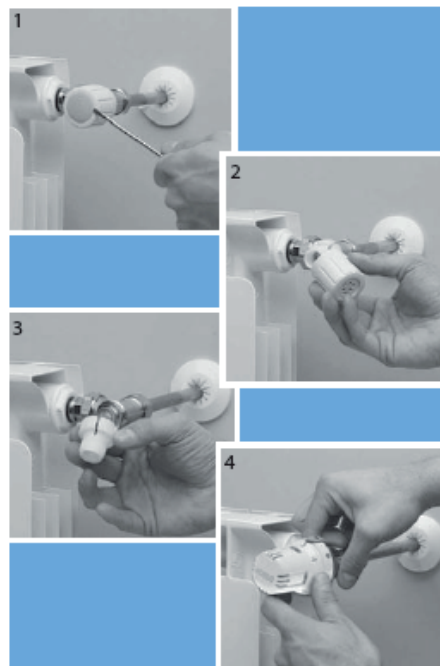
To work properly, the thermostatic head should be in horizontal position (as shown in the photos).

Do not put the thermostatic head behind curtains. Do not cover it with cover-radiators. Do not expose it to sunbeams.

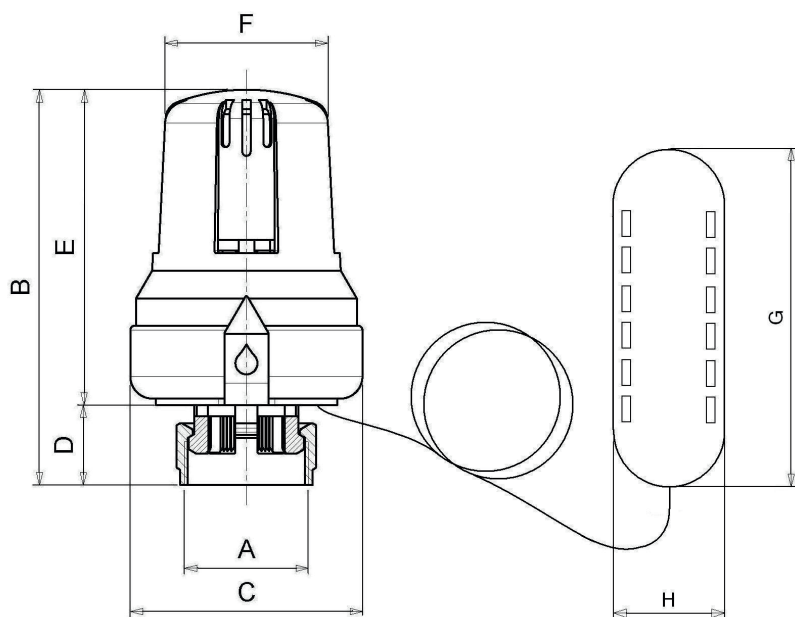
To install the thermostatic head, take the thermostatic valve's cap o (as shown in the photos 1 - 2 - 3 - 4).

To make the installation easier, turn the thermostatic head to position 5 and screw the threaded ring on the valve's body.

Now, regulate the temperature on the needed value, as shown in the following indicative table.



Dimensions



CODE	A	B	C	D	E	F	G	H
82987AC20	28X1,5	89,5	52,5	18	71,5	37	96	36
82990AC20	30X1,5	89,5	52,5	18	71,5	37	96	36