

# UNDER-SINK REGULATING VALVES WITH FILTER Art. 516 - 518

## DESCRIPTION

Angle regulating chromed valves with filter, shutter-type, with stainless steel rosette.

## PRODUCTS

*Article 516*



Angle reg. valve with filter and adjustable connection for Ø10mm copper pipe

*Article 518*



Angle regulating valve with filter and flat seat connection for flexible pipe

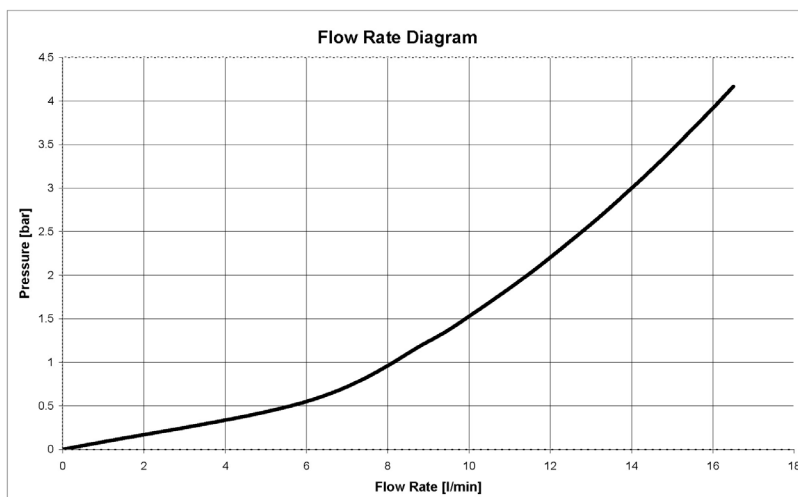
## TECHNICAL FEATURES

Body	Brass CW 617 N - UNI EN 12165 - Chrome
External components	Brass CW 614 N - UNI EN 12164 - Chrome
Internal components	Brass CW 614 N - UNI EN 12164
Rosette	Stainless Steel
Knob	ABS Chrome
Filtering mesh	Stainless Steel
Hydraulic seals	Rubber NBR 70 SH
Max operating pressure:	10bar
Max operating temperature:	90°C

## ARTICLE

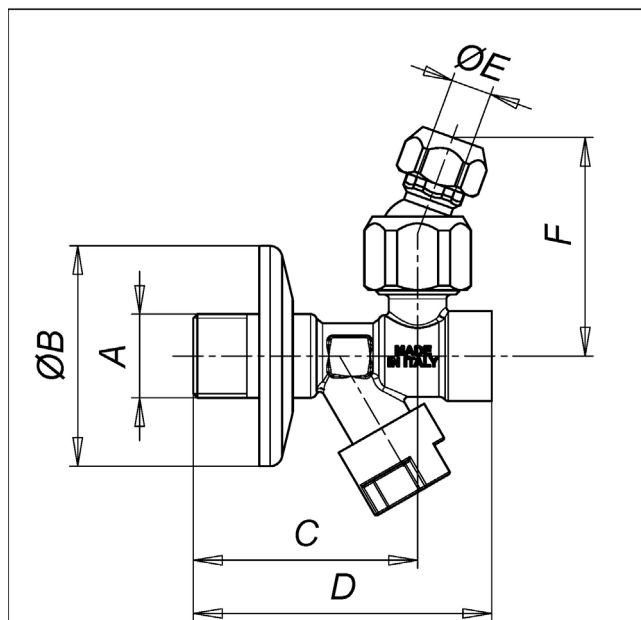
CODE	DESCRIPTION	SIZE	CONNECTION
90516AD07	- Angle reg. valve with filter and adjustable connection for copper pipe	G 1/2"	Ø10 mm copper pipe
90518AC07	- Angle reg. valve with filter and flat seat connection for flexible pipe	G 1/2"	Flat seat G3/8"
90518AD07	- Angle reg. valve with filter and flat seat connection for flexible pipe	G 1/2"	Flat seat G1/2"

## HYDRAULIC FEATURES



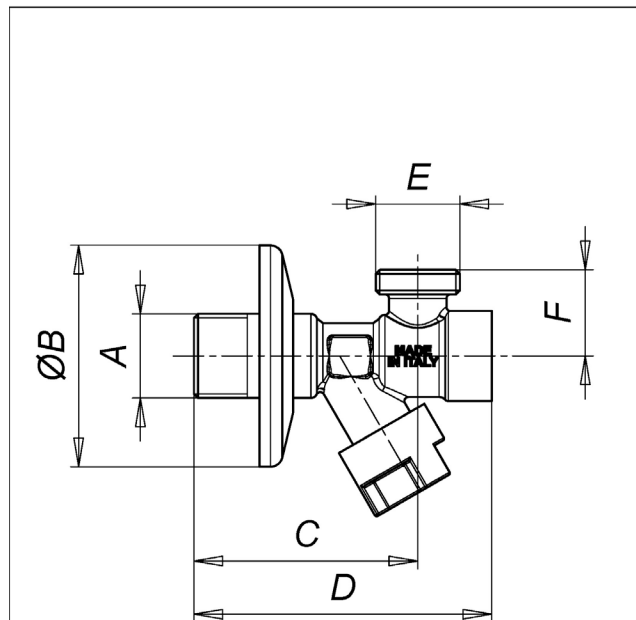
## DIMENSIONS

*Article 516*



CODE	A	ØB	C	D	ØE	F
90516AD07	G1/2"	54	55	73	10	55

*Article 518*



CODE	A	ØB	C	D	E	F
90518AC07	G1/2"	54	55	73	G3/8"	21
90518AD07	G1/2"	54	55	73	G1/2"	21